

## A classification rules extraction algorithm base on fish swarm optimization

Zhehuang Huang

School of Mathematics Sciences, Huaqiao University, 362021, China

**ABSTRACT :** Group classification rules extraction is an important task in pattern recognition. In this paper, we proposed a classification rules extraction algorithm base on fish swarm optimization. There are two main works in this article: firstly, fish swarm optimization is introduced. Secondly, a classification rules extraction algorithm is proposed. The proposed algorithm provides a good practicability and a promising future for pattern identification.

**Keywords -** classification rules extraction, fish swarm optimization, Intelligent Optimization.

### I. INTRODUCTION

Intelligent optimization algorithm is the collective behavior of decentralized, self-organized systems, natural or artificial which has been widely application in many areas, such as neural network training [1], communication networks [2], classification and clustering [3].

Artificial fish swarm algorithm [4, 5] is a behavior-based artificial intelligence method which simulates the behavior of the fish in the water to solve the optimization problem. Artificial fish swarm algorithm evolved from the behavior of fish [6] in the water looking for food. If we planted food in front of an area in the fish ponds, and there will be a lot of fish concentrated over. Fish in the water generally have three behaviors such as feeding, cluster, rear. Artificial fish swarm algorithm have the features: (a)converges faster, it can be used to solve the problem of real time requirements;(b)It can be used to quickly get a feasible solution for less precision problem;(c)It does not require strict mechanism and an accurate description of the problem, which makes its application range widely expanded.

We proposed a new classification rule acquisition method based on artificial fish swarm algorithm. The classification based on fish swarm optimization has good global convergence which is better than the traditional intelligent optimization algorithm.

This paper is organized as follows. Firstly, artificial fish swarm algorithm is introduced. Secondly, a classification rules extraction algorithm is presented. Finally some analysis and conclusions are given on the systems.

### II. ARTIFICIAL FISH SWARM ALGORITHM

Supposed the state vector of artificial fish swarm is  $X = (x_1, x_2 \cdots x_n)$ , where  $x_1, x_2 \cdots x_n$  is each real time status of the fish, i.e. the optimization process variables of each fish. The food concentration in this position of fish is expressed as  $y = f(x)$ , where  $y$  is the objective function value, which means that the distance between the artificial fish as  $d_{i,j} = \|X_i - X_j\|$ ,  $i$  and  $j$  is a random fish. *Visual* is the distance perception of artificial fish from the artificial fish. The artificial fish occurs only in the inner radius of the circle to the length of the field of vision various acts. *Step* means the maximum step size of artificial fish.  $\delta$  is the degree of congestion factor. The following behavior conditions can help to get the minimum value.

(1) Foraging behavior

Supposed the state of artificial fish is  $X_i$ , Select a state  $X_j$  within its sensing range randomly. If  $X_j$  superior to  $X_i$ , then move to  $X_j$ ; on the contrary, selected randomly state  $X_j$  and determine whether to meet the forward conditions; repeated several time, if still not satisfied forward conditions, then move one step randomly.

(2) Flocking behavior

Supposed the current state of artificial fish is  $X_i$  ( $d_{i,j} < Visual$ ), number of artificial fish for  $n_f$ , if  $n_f < \delta$  indicates that the partners have more food and less crowded, if  $Y_c$  better than  $Y_i$ , then go forward toward the center of the direction of the partnership, otherwise perform foraging behavior.

**(3) Rear-end behavior**

Supposed the state of artificial fish is  $X_i$ , explore its optimal state  $X_{max}$  from Visual neighbors,  $X_{max}$  better than  $Y_i$ . The number of partners of  $X_{max}$  is  $n_f$ , if  $n_f < \delta$  indicates that near distance have more food and not too crowded, further move to the front of  $X_{max}$  position; otherwise perform foraging behavior.

The artificial fish swarm algorithm is shown as algorithm 1.

- 1). Initialize the parameters of artificial fish, such as *Step*, *Visual*, the number of exploratory try number, maximum number of iterations, randomly generated  $n$  fish;
- 2). Set bulletin board to record the current status of each fish, and select the optimal value recorded;
- 3). Behavior selection, implementation of foraging behavior, flocking behavior, rear-end behavior and special foraging behavior;
- 4). Optimal value in bulletin board is updated;
- 5). Whether the termination condition is satisfied? if not satisfied, return to step 2.

Algorithm 1 Artificial fish swarm algorithm

The flow chat of artificial fish swarm algorithm is shown as figure 1.

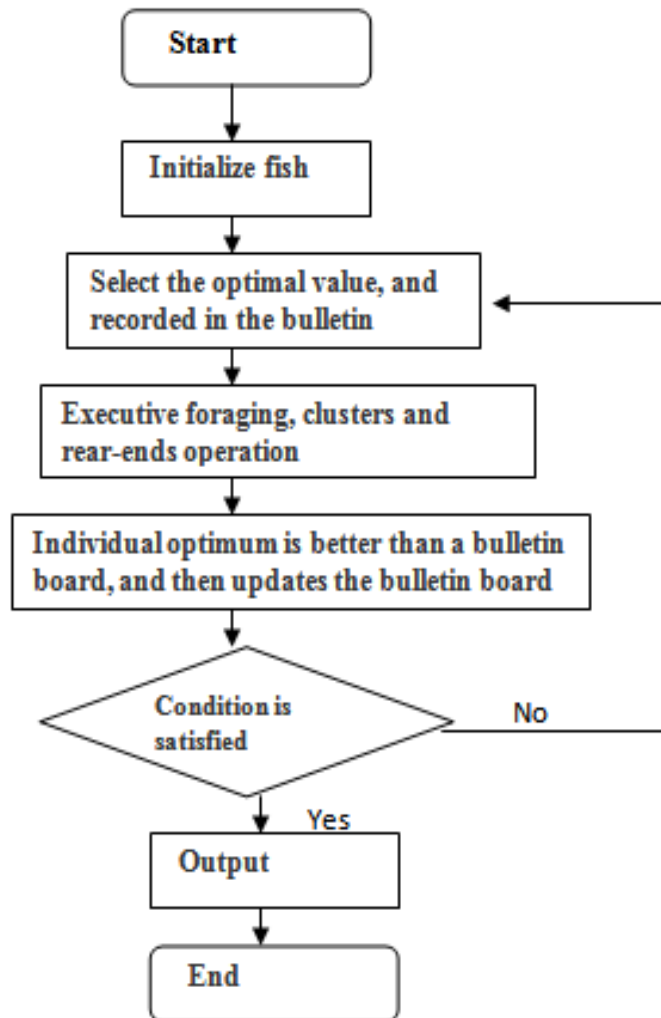


Fig. 1. Flow chat of artificial fish swarm algorithm

### III. CLASSIFICATION RULES EXTRACTION ALGORITHM BASE ON FISH SWARM OPTIMIZATION

The classification rules can be described as:

if  $feature1\_min < x_1 < feature1\_max$  ,  
 $feature2\_min < x_2 < feature2\_max$  ,  
.....  
 $featuren\_min < x_n < featuren\_max$  ,  
then class \_ x .

Supposes each fish is

$X = (x_1, x_2 \cdots x_n)$  , where  $x_i = (feature\_i\_min, feature\_i\_max)$  .

The class classification rules extraction algorithm base on fish swarm optimization is shown as follows.

- 
- 1). A fish on behalf of a classification rule, initialize a certain number of fish, and form fish swarm;
  - 2). Set bulletin board to record the current status of each fish, and select the optimal value to record;
  - 3). Behavior selection, implementation of foraging behavior, flocking behavior, rear-end behavior and special foraging behavior;
  - 4). Optimal value in bulletin board is updated;
  - 5). Whether the termination condition is satisfied? if not satisfied, return to step 2;
  - 6).Output optimal solution
- 

Algorithm 2 Artificial fish swarm algorithm

### IV. CONCLUSION

In this paper, we proposed a classification rules extraction algorithm base on fish swarm optimization which provides a good practicability and a promising future for pattern classification. We will apply it to other areas.

### ACKNOWLEDGEMENTS

This work was supported by the science and technology project of Quanzhou (Grant No.2012Z91).

### REFERENCES

- [1]. Chia-Feng J. A hybrid of genetic algorithm and particle swarm optimization for recurrent network design. *Systems, Man and Cybernetics, Part B, IEEE Transactions*, 34(2), 2004, 997-1006.
- [2]. Mohemmed A W, Kamel N. Particle swarm optimization for Bluetooth scatter net formation. *2nd International Conference on Mobile Technology, Applications and Systems*, 2005.
- [3]. Liverira L S, Britto A S, Sabourin R. Improving Cascading classifiers with particle swarm optimization. *Proceedings Eighth International Conference on Document Analysis and Recognition*, 2005, 570-574.
- [4]. LI Xiao-lei, FENG Shao-hui, QIAN Ji-xin. Parameter Tuning Method of Robust PID Controller Based on Artificial Fish School Algorithm. *Chinese journal of Information and Control*, 33(1) ,2004,112-115.
- [5]. LI Xiao-lei, LU Fei, TIAN Guo-hui, QIAN Ji-xin. Applications of artificial fish school algorithm in combinatorial optimization problems. *Chinese journal of Shandong University (Engineering Science)*, 34(5), 2004, 65-67.
- [6]. LI Xiao-lei, QIAN Ji-xin. Studies on Artificial Fish Swarm Optimization Algorithm based on Decomposition and Coordination Techniques. *Chinese Journal of Circuits and Systems*. 8(1), 2003, 1-6.